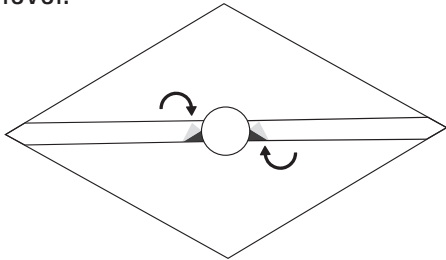




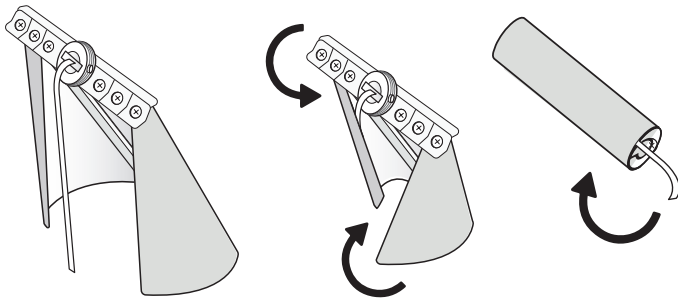
# Model 9700 INSTALLATION TIPS AND TROUBLESHOOTING

## INSTALLATION TIPS

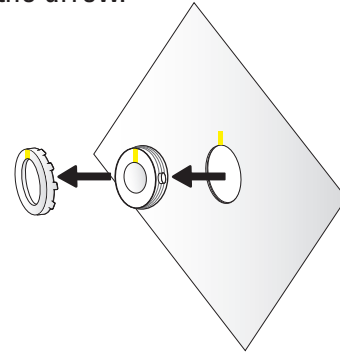
- 1. Sticker Application:** When applying the sticker, only remove the middle portion of the sticker backing to make it easier to remove if you need to reposition. Then remove the top and bottom backing once you have it level.



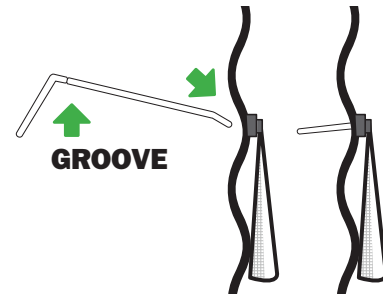
- 2. Activator Rolling:** Roll the activator at an angle around the activator frame. This allows for a tighter roll, making it easier to push through the drilled hole.



- 3. Align the Three Yellows:** When fastening the nut, align the yellow paint on the activator frame to the arrow on the sticker. The nut also has yellow paint to align with the arrow.



- 4. Find the Notch:** Push the connecting rod all the way down through the orange o-ring. Then gently pull back up on the connecting rod until you feel the groove seat into the o-ring.



## TROUBLESHOOTING

- 1. Always Displays Partial Yellow:** It is likely that the connecting rod is not properly seated in the o-ring. Remove the indicator and properly seat the notch of the connecting rod into the o-ring. See "Find the Notch" in the Tips and Tricks.
- 2. Stuck in Yellow Position:** High moisture or coated granular materials can stick to the bin wall. Visually check inside bin to see if granular material has stuck onto the bin wall against the activator. If granular material is not causing the problem, tighten the return spring tension. Turn the thumbscrew on the bottom of the indicator in a clockwise direction until the indicator is completely black.
- 3. Only Displays Partial Yellow:** Reduce the spring tension by turning the thumbscrew on the bottom of the indicator counterclockwise.

Order from: **C A Briggs Company**

622 Mary Street; Suite 101; Warminster, PA 18974

Phone: 267-673-8117 - Fax: 267-673-8118

[Sales@cabriggs.com](mailto:Sales@cabriggs.com) - [www.cabriggs.com](http://www.cabriggs.com)